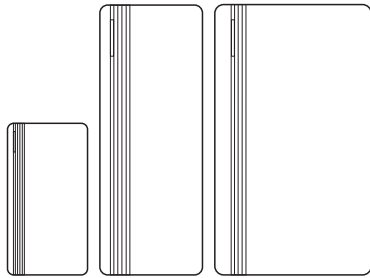


Proximity Reader



User Manual

1. Introduction

The readers are Wiegand Output Proximity Readers, compatible with 125KHz EM or 13.56MHz Mifare card. The reader is fully potted, which allows it can be mounted either indoor or outdoor.

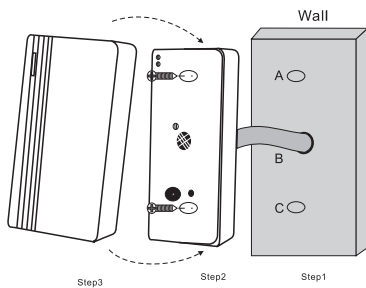
2. Specifications

Model	Mini	Slim	Wide
Operation Voltage	9~18V DC		
Working Current	<100mA		
Frequency	125KHz or 13.56MHz		
Card Type	EM or Mifare card		
Read Range	0~5 cm		
Output Format	EM: Wiegand 26bits (default), 34bits optional Mifare: Wiegand 34bits (default), 26bits optional		
Operating Temperature	EM Reader: -40°C~60°C(-40°F~140°F) Mifare Reader: -25°C~60°C(-13°F~140°F)		
Operating Humidity	10% to 98% RH		
Color	Black		
Index of Protection	IP66		
Dimension (H x W x T)	70x37x17mm	120x48x20mm	120x75x20mm
Net Weight	48g	105g	155g
Shipment Weight	88g	145g	195g

- 01 -

3. Installation

- Drill 2 holes (A, C) on the wall for the screws and one hole for the cable
- Knock the rubber bungs to the holes (A, C)
- Thread the cable through the cable hole (B)
- Fix the unit on the wall with 2 screws
- Attach the front cover to the unit



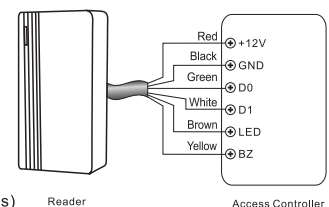
- 02 -

Wiring

Model	Function	Notes
Red	Power	+DC (9-18V DC)
Black	GND	Ground
Green	D0	Data 0
White	D1	Data 1
Brown	LED	Green LED Light Control
Yellow	Buzzer	Buzzer Control

(Remarks: Brown and Yellow wires are optional connections)

Connection Diagram



4. Function Table sheet

Read Card	The LED light will turn into Green, and the buzzer sounds a beep, at the meantime, the reader outputs the Wiegand signal
External LED Control	When the input voltage for LED is low, the LED will turn into Green
External Buzzer Control	When the input voltage for Buzzer is low, the Buzzer will sound
Wiegand Data Output	Wiegand 26 or 34 bits available, factory default setting is Wiegand 26 bits for EM type, and 34bits for Mifare type

Packing List

Name	Quantity
Reader	1
Manual	1
Wall Fixing Plugs	2
Self Tapping Screws	2

- 03 -