

Motion detector

Model Name: **Ajax MotionProtect Curtain**

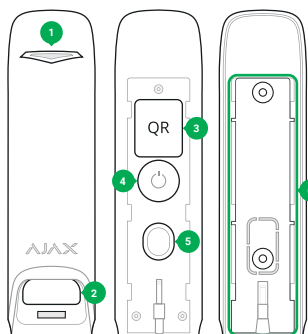
Wireless curtain motion detector with anti-masking protection and pet immunity

MotionProtect Curtain is a "blind" type motion detector, equipped with two PIR sensors. It detects motion up to 11 meters away, while protecting against masking and ignoring pet movement. It is connected to the Ajax security system via Jeweller protected protocol, with a transmission distance of up to 1,700 meters without obstacles. The detector operates up to 3 years with the bundled battery. It can be installed outdoors.

The detector only operates with Ajax hubs. Connection to ocBridge and uartBridge integration modules is not provided.

IMPORTANT: This Quick Start Guide contains general information about the MotionProtect Curtain. Before using the device, we recommend to reviewing the User Manual on the website: ajax.systems/support/devices/motionprotectcurtain

FUNCTIONAL ELEMENTS



- 1 – Light indicator
- 2 – Detector light filter
- 3 – QR Code
- 4 – "On" button
- 5 – Tamper button
- 6 – SmartBracket attachment panel (the perforated part is needed in order for the tamper function to work when attempting to pull the detector away from a surface)



- 7 – Masking sensors
- 8 – Aperture for installing SmartBracket panel with a screw

DETECTOR LOCATION SELECTION

When choosing the installation site for MotionProtect Curtain, consider the orientation of the filters and obstacles that may impair vision and the passage of the radio signal.

Do not install the device:

1. In front of moving objects with a temperature close to the human body temperature (moving blinds above a radiator).

DETECTOR LOCATION SELECTION

2. Near places with fast circulation of hot air (ventilation system outputs, exhausts, electric convection heaters with automatic 'on' function or automatic rotation).
3. In front of bodies of water, swimming pools, fountains and other surfaces that reflect sunlight.
4. In front of trees and bushes, who can move.
5. Near metal objects and mirrors (they can interfere with the RF signal and cause it to fade).

When installing outdoors, the detector shall be installed with the light filter down!

Before the device is mounted using screws, please test the signal strength and detection area in the Ajax Security System application for at least one minute. The tests will show the quality of detector connection with the hub and will confirm the appropriateness of the installation site.

Status indicator		Signal level
Lights with interruptions once every 1.5 seconds		Excellent signal level
Blinks 5 times per second		Good signal level
Blinks 2 times per second		Poor signal level
Lights up for a short time once every 1.5 seconds		No signal

DEVICE INSTALLATION

There are two options for installing MotionProtect Curtain: directly on a surface or on the bundled bracket.

1. Using the bundled screws or other equally reliable fasteners, attach the SmartBracket panel or bracket on the surface. The SmartBracket attachment panel is fixed to the bracket using screws.
2. Place the detector on the SmartBracket attachment panel.
3. If the antimasking function is enabled, wait until the calibration is completed.
4. Mount the detector on the SmartBracket attachment panel using a screw.

Masking sensor calibration begins automatically when the MotionProtect Curtain is mounted on the attachment panel. For correct calibration ensure that there is no obstacles within 30 cm from the detector for 30 seconds, when the LED indicator stops blinking.

This product can be used across all EU member states.

This device in compliance with the essential requirements and other relevant provisions of Directive 2014/53/EU. All essential radio test suites have been carried out.

CONNECTION AND SETUP

Connect the detector to the hub and set it up using the Ajax app. Place the detector in the hub coverage area and follow the connection procedure.

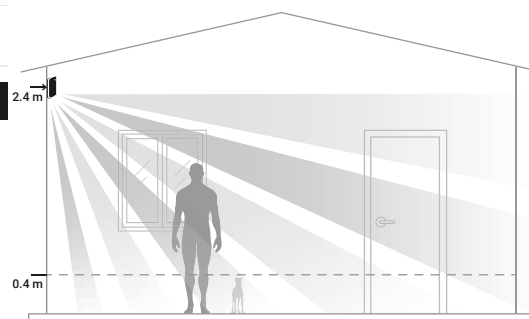
Prior to using the MotionProtect Curtain, set the detector's suitable sensor sensitivity level in settings:

Sensitivity level	Case
High	For sites with minimum obstacles. Motion is detected at the maximum distance.
Medium	For sites with possible obstacles. Default value.
Low	For sites with strong noise or when the significant detection range is not required.

You can change the following parameters:

Antimasking — the detector detects masking irrespective of its arming mode.

Pet immunity — the detector will ignore pets weighing up to 15 kg and up to 40 cm tall when installed at a height of 2.4 m. The detection range will be reduced to 6/5/3 m (depending on the sensitivity level) with this setting. The alarm will be sent to the hub only when detecting identical motion signals from two PIR sensors if the detection time difference in this case does not exceed 0.75 s.



If the height and slope angle are changed, the motion detection area changes and the pet ignoring function may not operate correctly.

When pet immunity is not activated, the MotionProtect Curtain detects motion up to 11/10/9 m (depending on the sensitivity level) away and sends an alarm even when only one of the two PIR sensors is activated.

The sensor ignores animals at a distance:

Little birds (sparrow)	From 1 meter from the sensor
Large birds (crow)	From 1.5 meters from the sensor
Cats and dogs	From 2 meters from the sensor

TECH SPECS

Sensitive element	PIR sensor, 2 pcs
Motion detection distance	Up to 11/10/9 m (when pet immunity is active — up to 6/5/3 m)
Motion detector viewing angles (H/V)	6°/90°
Pet ignoring option	Yes, up to 15 kg and 40 cm (if detector is installed vertically at a height of 2.4 m)
Tamper protection	Yes, to detect removal and integrity damage to the body case.
Masking protection	Yes
Frequency band	868.0 – 868.6 MHz
Effective radiated power	9 dBm / 8 mW (limit 20 mW)
Radio signal modulation	GFSK
Radio signal range	Up to 1,700 m (any obstacles absent)
Power supply	1 battery CR123A, 3 V
Battery life	Up to 3 years
Operating temperature range	From -25° to +60° C
Protection class	IP54
Overall dimensions	134 x 44 x 36 mm
Weight	118 g

COMPLETE SET

1. MotionProtect Curtain
2. Battery CR123A (pre-installed)
3. Installation kit
4. Bundled bracket
5. Quick Start Guide

WARRANTY

Warranty for Ajax devices is valid for two years after the purchase date and does not apply to the supplied battery. If the device does not work correctly, you should first contact the support service—in half of the cases, technical issues can be solved remotely!

The full text of the warranty is available on the website:

ajax.systems/warranty

User Agreement:

ajax.systems/end-user-agreement

Technical support:

support@ajax.systems

Manufacturer: "AJAX SYSTEMS MANUFACTURING"
LIMITED LIABILITY COMPANY
Address: Skylyarenko 5, Kyiv, 04073, Ukraine

www.ajax.systems



CAUTION: RISK OF EXPLOSION IF BATTERY IS REPLACED BY AN INCORRECT TYPE. DISPOSE OF USED BATTERIES ACCORDING TO THE INSTRUCTIONS